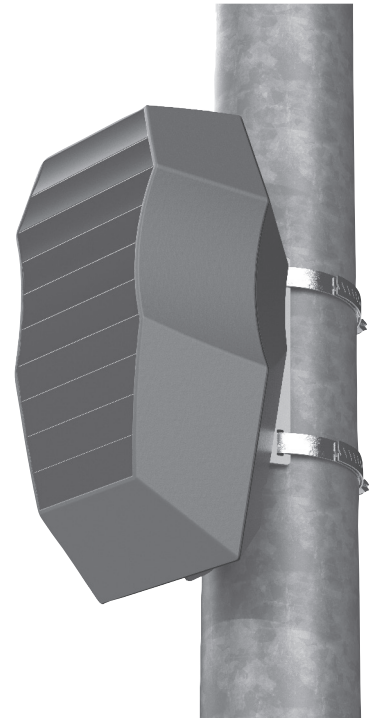


## LIX.DETECT SLC

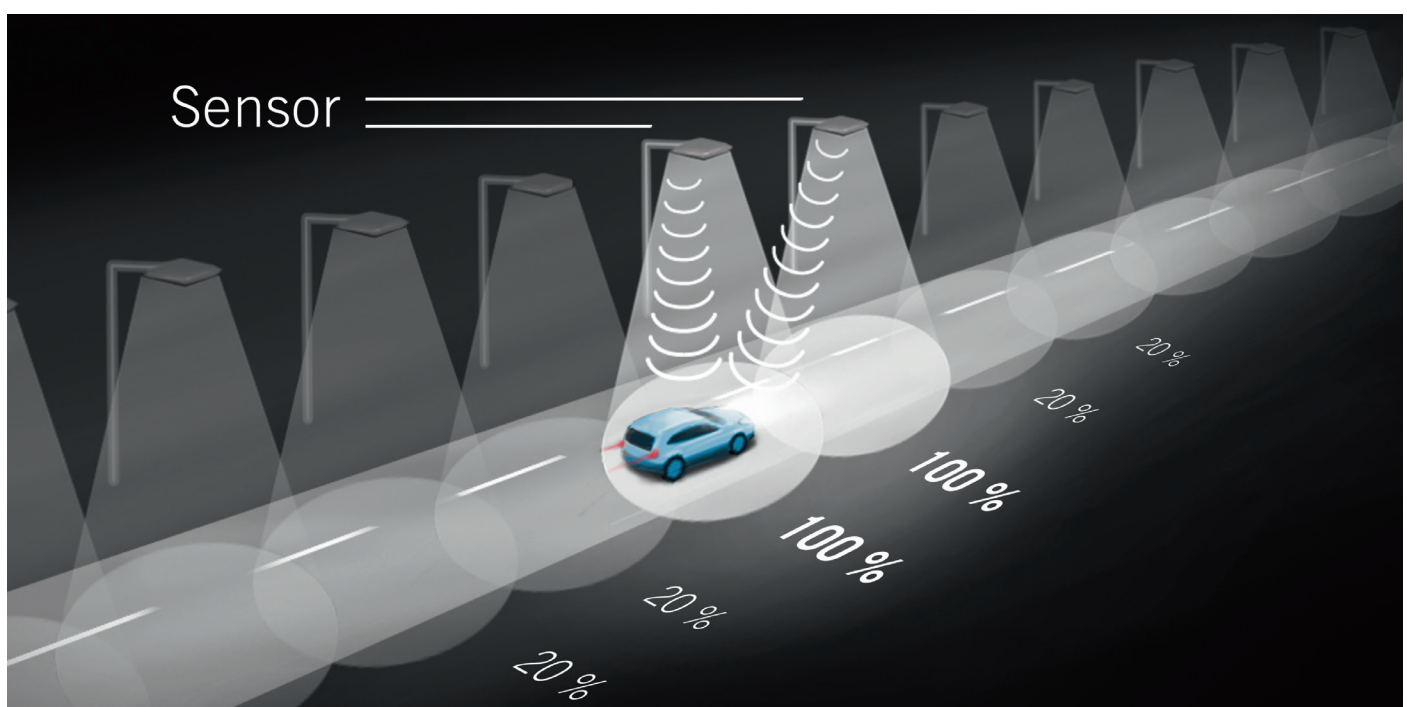
lix.detect SLC features radar-based motion detection of persons, bikes and vehicles with integrated dimming control and wireless connectivity. It can turn any modern LED street light into an intelligent on-demand streetlight.

lix.detect SLC combines our long-lasting experience in radar-based motion detection with the proven wireless connectivity solution by **eSAVE**.



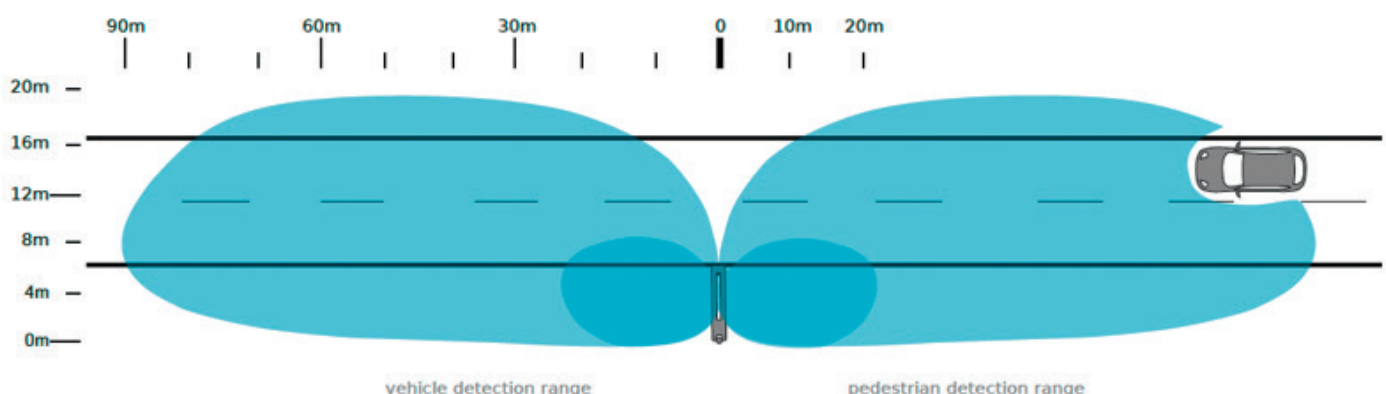
## ALL ADVANTAGES AT A GLANCE

Light conforming to standards when it is needed	Reduced light pollution
Fully configurable light profiles	Increased life span of connected street lights
Street lights can work as a standalone solution or can be freely grouped together	Plug-and-play solution
Increased efficiency and economy	Retrofitting of existing street lights possible
Less energy consumption, reduced CO2 emissions	Cloud-based web interface with seamless control, configuration, alerts & software updates (optional)
	Made in Austria



## TECHNICAL SPECIFICATIONS:

<b>System</b>	Radar-based motion detection of persons, bikes and vehicles with integrated dimming control and wireless connectivity
<b>Sensors</b>	2 radar sensors, 24 GHz
<b>Speed detection</b>	Moving objects from 1 to 110 km/h
<b>Detection area</b>	Pedestrians & bikes up to 20 m on each side, vehicles up to 90 m on each side (6.5 m mounting height)
<b>Mounting</b>	On the lamp pole
<b>Mounting height</b>	5 to 9 m
<b>Dimming/ballast control</b>	1-10V, DALI, PWM
<b>Control</b>	Light intensity levels, dimming profiles, lamp grouping, fault detection
<b>Monitoring &amp; Visualization</b>	Event logging in each lix.detect SLC device. Monitoring and visualization via Windows © app and USB dongle or optionally via gateway and web platform
<b>Networking</b>	Wireless mesh network, 2.4 GHz, IEEE 802.15.4, antenna integrated in housing; fully compatible with esave
<b>Connectivity range</b>	Up to 300 m
<b>Supply voltage</b>	lix.detect SLC AC: 100-240 VAC lix.detect SLC DC: 15-35 VDC
<b>Power consumption</b>	1.1 W typ., 1.5 W peak
<b>Electrical safety</b>	Class II
<b>Operating conditions</b>	-30°C to +70°C
<b>Housing</b>	Polycarbonate, RAL 9005 (deep black), flame retardant, UV-stabilized, IP66
<b>Dimensions</b>	208 mm x 122 mm x 82 mm
<b>Certifications</b>	CE compliant EN 300 328 V1.8.1: 2012 EN 301 489-1 V1.9.2: 2011 EN 301 489- V2.2.1: 2012 EN 61000-6-2: 2005 EN 60950-1: 2006



using **eSAVE** technology

© lixtec GmbH. v1.0, February 2018. Subject to change without prior notice.

lixtec GmbH | dynamic light solutions | Oberregauer Strasse 48 | 4844 Regau | Austria | info@lixtec.com